



Crescent™

Product Code	Construction	Material	Weight	Thickness	Max Width
TXDSBO	Warp-knit	100% Polyester	8.26 oz/sq.yd	0.00 mm	126 in.
 TXDSBO-RY			280 GSM		
 TXDSBO-AM					

Description

Double Print Fabric

Features

Blockout, Soft, Double-Sided Printable

Applications

Display | SEG | Blockout

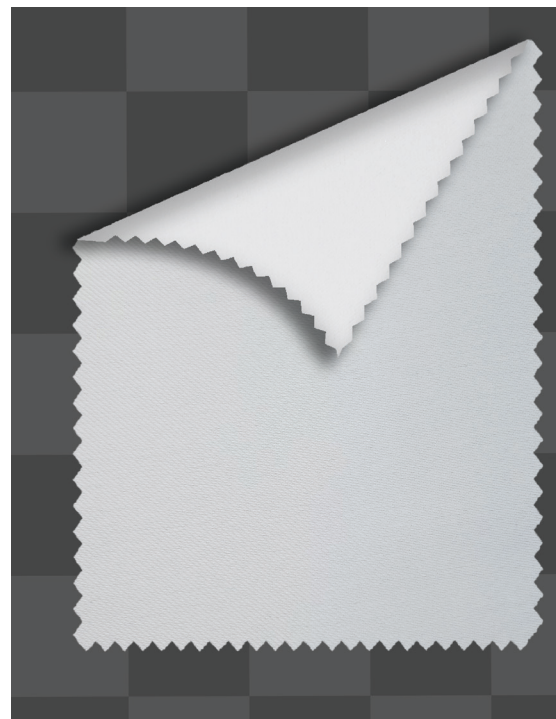
Ink Compatibility

Dye Sub Transfer | Latex

Cutter Compatibility

Hot Knife / Laser Only

Shrink (l):	—	
Shrink (w):	—	
Stretch (l):	—	
Stretch (w):	—	
Stretch at Burst (l):	—	
Stretch at Burst (w):	—	
Burst Strength (l):	— lbs/in.	
Burst Strength (w):	— lbs/in.	
Tensile Strength (l):	— lbs/in.	
Tensile Strength (w):	— lbs/in.	
Burst Strength:	— lbs	
Yellowing:	— dE	
Max Roll Length:	50m	
Available Recycled:	Yes	
Available Anti-microbial:	Yes	



NFPA-701 flame retardance certified.
Recommended transfer settings for sublimation are
374°F-410°F for 40-100 seconds at 40psi.